



PDI POST

JANUARY EDITION 2022

INSTRUCTIONAL FEEDBACK

MARQUES STEWART

One of the primary goals of the Department of Teaching and Learning is to be able to provide helpful feedback that is aimed at improving student outcomes. Beginning Monday, January 10, 2022, the PDI team of coordinators and strategists will begin to provide written observation feedback when visiting classrooms. Upon completion of the observation, the feedback will be placed on a message pad and the team member will leave a copy on teacher's desk prior to leaving the classroom. Please take a moment to review the feedback and if there are any questions or concerns regarding the feedback, please find time to schedule a conference with individual who provided the feedback at the link listed below. Upon requesting the feedback conference, please allow the coordinator or strategist 48 hours to respond to your request. As stated earlier, the goal of these visits is to ultimately provide feedback that is bite-sized and actionable that will assist with improving student outcomes

[Click Here](#)



SPELLING BEE

CHRISTELLE HARDING

The district Scripps Spelling Bee is coming soon. Classroom and Building Spelling Bee January 17-21, 2021 The K-6 District Spelling Bee January 27, 2022 at MHS and the Middle School District Spelling Bee will be held on January 28, 2021 at JSMS. Doors open at 8:30, 8:50 students need to be on stage and ready to go over rules. Spelling Bee begins promptly at 9:00. Macon County Spelling Bee will be held Tuesday, February 16, 2022 at Richland Community College. Please ask your administrator for spelling lists and details.

ENCORE

RHONDA COX

CONGRATULATIONS to all the Music, Band and Orchestra teachers for their wonderful in-person and virtual holiday concerts. You all did a fantastic job and your students put on several great performances.

Encore IAR READING SUPPORT

Starting the second week of January through the end of February elementary and middle school Art, Music and PE 3rd-8th grade teachers will be helping to support IAR Reading. Once a week in their 3rd-8th grade Encore classes students will be given the opportunity to practice reading for their IAR tests. Students will be given a short reading assignment with 3 questions to answer. The readings and questions are designed to mimic what students will see on their IAR tests. Our goal is to assist teachers in raising their students IAR scores in reading.

MATH

KELLI MURRAY

Teaching MATH for understanding can be a challenge, but you don't have to do it all on your own. Interested in collaborating with me and/or other teachers to make math lessons more engaging?

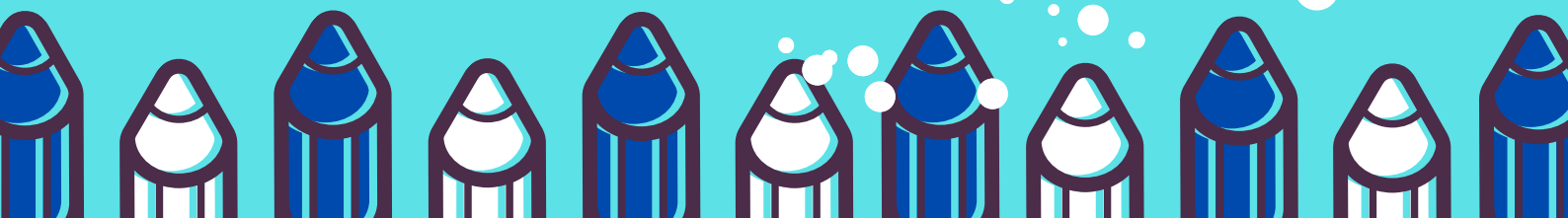
LET'S CONNECT

Don't forget: DPS will participate in the annual CONTIG Competition on April 8th. Need more information? Click [here](#) for more details or reach out. There is still time to sign up for Contig Overview/Training on January 10th and 11th. Log into Frontline and get signed up today.

7 MINDSETS

CHRISTELLE HARDING

The mindset of the month for January is 100% accountable. The critical components of this mindset are; 1. Owning Your Life 2. Overcome Limiting Beliefs 3. Focus Your Energy and 4. Grow Through Life. If you have any 7 Mindset activities or pictures you would like to feature in a future PDI Post please send them to charding@dps61.org.



SOCIAL STUDIES

BRENNA TRIPP

A Social Studies fair will be held during the Spring this year! Please contact me if you would like to be part of the planning process for this event.

Textbooks for McGraw Hill should all be delivered. Please contact me if you still do not have your texts.

We will be working to develop a 6-8 Civics curriculum to align with state mandates. Please contact me at bjtripp@dps61.org if you'd like to assist in this process.

ELA

YOLANDA MINOR

Upcoming PD opportunities:

Online

1. HMH Into Reading Model Lesson: Writing 1/11/22, 4:30pm-5:30pm
2. HMH Into Reading Model: Foundational Reading 1/19/22, 6pm-7pm
3. HMH Into Literature Model Lesson: Vocabulary, 1/25/22, 4:30pm-5:30pm

HMH Into Literature: Backwards Planning an Into Literature Unit, 1/19/22, 4:30 – 5:30.

You must register on www.mylearningplan.com and on HMH Live Events

“What Teachers can Do to Help Struggling Readers Who feel Ashamed”.

[Click Here](#)

